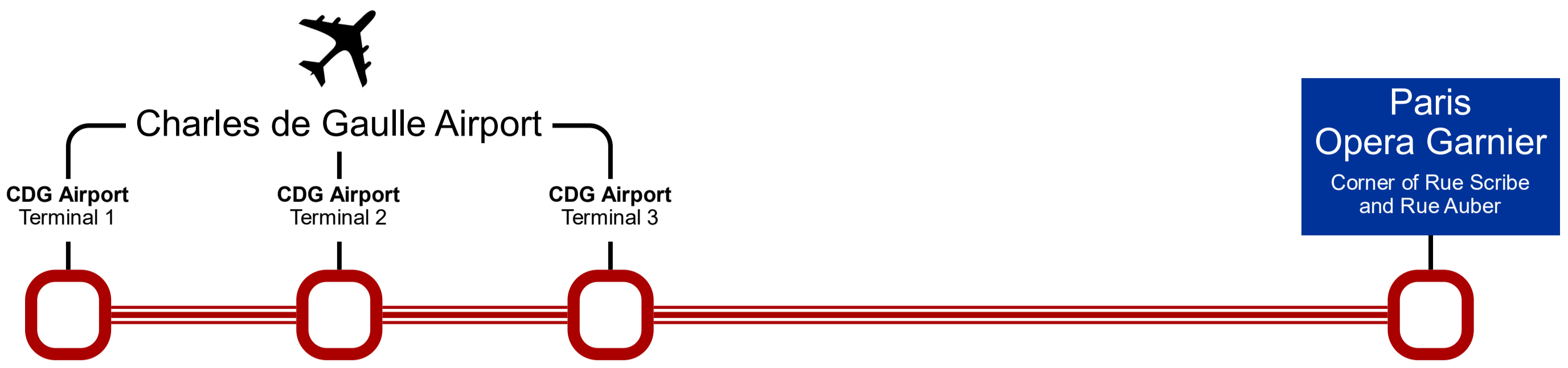




RoissyBus from Paris Opera Garnier to CDG airport

Direct shuttle bus service that runs between Charles de Gaulle Airport terminals 1, 2 and 3 and Opera Garnier on Rue Scribe



This bus shuttle service runs 7 days a week with a journey time of approximately 1 hr
Please remember this journey time and the timetables below are given for reference only and is subject to traffic conditions between CDG airport and Paris Opera

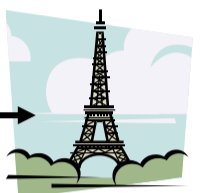
RoissyBus airport shuttle bus timetables

Direction CDG Airport to Opera Garnier



Bus service 7 days a week journey time approximately 1 hr

journey time is given for reference only and is subject to traffic conditions

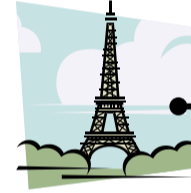


RoissyBus - Bus departure times from Charles de Gaulle Airport

Charles de Gaulle Airport to Paris-Opéra, Pick-up points: T1 - T2A - T2F - T3 Terminals

6.00 hrs	8.00 hrs	10.00 hrs	12.00 hrs	14.00 hrs	16.00 hrs	18.00 hrs	20.00 hrs	22.05 hrs
6.15 hrs	8.15 hrs	10.15 hrs	12.15 hrs	14.15 hrs	16.15 hrs	18.15 hrs	20.15 hrs	22.25 hrs
6.30 hrs	8.30 hrs	10.30 hrs	12.30 hrs	14.30 hrs	16.30 hrs	18.30 hrs	20.30 hrs	22.45 hrs
6.45 hrs	8.45 hrs	10.45 hrs	12.45 hrs	14.45 hrs	16.45 hrs	18.45 hrs	20.45 hrs	23.05 hrs
7.00 hrs	9.00 hrs	11.00 hrs	13.00 hrs	15.00 hrs	17.00 hrs	19.00 hrs	21.05 hrs	23.25 hrs
7.15 hrs	9.15 hrs	11.15 hrs	13.15 hrs	15.15 hrs	17.15 hrs	19.15 hrs	21.25 hrs	23.45 hrs
7.30 hrs	9.30 hrs	11.30 hrs	13.30 hrs	15.30 hrs	17.30 hrs	19.30 hrs	21.45 hrs	00.05 hrs
7.45 hrs	9.45 hrs	11.45 hrs	13.45 hrs	15.45 hrs	17.45 hrs	19.45 hrs		00.30 hrs

Direction Opera Garnier to CDG Airport



Bus service 7 days a week journey time approximately 1 hr

journey time is given for reference only and is subject to traffic conditions



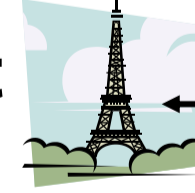
RoissyBus - Bus departure times from Paris Opera Garnier

Opera Garnier (corner of rue Scribe and rue Auber) to CDG: T1 - T2A - T2F - T3 Terminals

	7.00 hrs	9.00 hrs	11.00 hrs	13.00 hrs	15.00 hrs	17.00 hrs	19.00 hrs	21.00 hrs
5.15 hrs	7.15 hrs	9.15 hrs	11.15 hrs	13.15 hrs	15.15 hrs	17.15 hrs	19.15 hrs	21.20 hrs
5.30 hrs	7.30 hrs	9.30 hrs	11.30 hrs	13.30 hrs	15.30 hrs	17.30 hrs	19.30 hrs	21.40 hrs
5.45 hrs	7.45 hrs	9.45 hrs	11.45 hrs	13.45 hrs	15.45 hrs	17.45 hrs	19.45 hrs	22.00 hrs
6.00 hrs	8.00 hrs	10.00 hrs	12.00 hrs	14.00 hrs	16.00 hrs	18.00 hrs	20.00 hrs	22.30 hrs
6.15 hrs	8.15 hrs	10.15 hrs	12.15 hrs	14.15 hrs	16.15 hrs	18.15 hrs	20.20 hrs	23.00 hrs
6.30 hrs	8.30 hrs	10.30 hrs	12.30 hrs	14.30 hrs	16.30 hrs	18.30 hrs	20.40 hrs	00.00 hrs
6.45 hrs	8.45 hrs	10.45 hrs	12.45 hrs	14.45 hrs	16.45 hrs	18.45 hrs		00.30 hrs

RoissyBus airport shuttle bus ticket prices

Shuttle Bus Fares : Opera Garnier - CDG Airport



RoissyBus bus fares RATP shuttle bus service to CDG airport	ONE WAY Price per person	ROUND-TRIP Price per person
Adult and Children - Booking via RATP At automatic vending machines found within all stations	€12.00	€24.00
Adult and Children - Booking via Parisinfo https://en.parisinfo.com/transport/73373/RoissyBus	€13.20	€26.40

Airport bus ticket prices are correct at time of publication June 2020 but are subject to change without any prior notice

Buying your airport bus ticket

- You can purchase your ticket at automatic ticket booths located in all RATP stations
- From the bus driver onboard
- Purchase in advance online at - <https://en.parisinfo.com/transport/73373/RoissyBus>
But do bear in mind that if you do, the ticket is not refundable after purchase, and you must print this off and present this before you would be allowed to board the bus.



- [Paris Metro Maps](#)
- [Only Airports shuttle services](#)
- [CDG Airport shuttle services](#)
- [RER train lines](#)
- [Paris tramway lines](#)
- [Paris buses](#)