

2

Les Cars Air France Line 2

Roissy CDG Airport to Place Charles de Gaulle

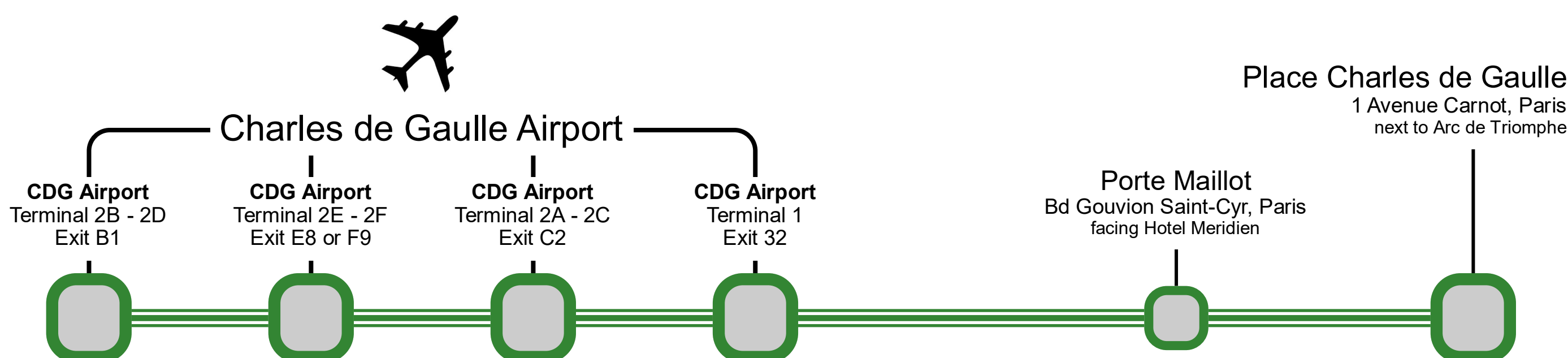
- Bus route map with stops
- Bus timetables
- Bus ticket costs

Now called
Le Bus Direct

See new maps, timetables and ticket prices

Les Cars Air France Line 2 bus route map and stops

Shuttle bus service that runs between Roissy Charles de Gaulle Airport terminals and Place Charles de Gaulle in Paris



This bus shuttle service runs 7 days a week with a journey time of approximately 1.00 hr
Please remember this journey time and the timetables below are given for reference only and is subject to traffic conditions between airports

Les Cars Air France Line 2 bus timetables

Direction Paris



Shuttle bus service 7 days a week with a journey time approximately 1.00 hr
journey time and timetable are given for reference only and is subject to traffic conditions

Line 2 - Airport bus departure times from CDG Airport to Place Charles de Gaulle

	7.15 hrs	9.15 hrs	11.15 hrs	13.15 hrs	15.15 hrs	17.15 hrs	19.15 hrs	21.15 hrs
5.45 hrs	7.45 hrs	9.45 hrs	11.45 hrs	13.45 hrs	15.45 hrs	17.45 hrs	19.45 hrs	21.45 hrs
6.15 hrs	8.15 hrs	10.15 hrs	12.15 hrs	14.15 hrs	16.15 hrs	18.15 hrs	20.15 hrs	22.20 hrs
6.45 hrs	8.45 hrs	10.45 hrs	12.45 hrs	14.45 hrs	16.45 hrs	18.45 hrs	20.45 hrs	23.00 hrs

Direction CDG Airport



Shuttle bus service 7 days a week with a journey time approximately 1.00 hr
journey time and timetable are given for reference only and is subject to traffic conditions

Line 2 - Airport bus departure times from Place Charles de Gaulle to CDG Airport

	7.15 hrs	9.15 hrs	11.15 hrs	13.15 hrs	15.15 hrs	17.15 hrs	19.15 hrs	21.15 hrs
5.45 hrs	7.45 hrs	9.45 hrs	11.45 hrs	13.45 hrs	15.45 hrs	17.45 hrs	19.45 hrs	21.45 hrs
6.15 hrs	8.15 hrs	10.15 hrs	12.15 hrs	14.15 hrs	16.15 hrs	18.15 hrs	20.15 hrs	22.20 hrs
6.45 hrs	8.45 hrs	10.45 hrs	12.45 hrs	14.45 hrs	16.45 hrs	18.45 hrs	20.45 hrs	23.00 hrs

Direction CDG Airport



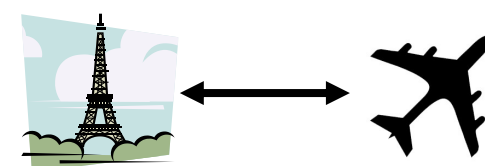
Shuttle bus service 7 days a week with a journey time approximately 1.00 hr
journey time and timetable are given for reference only and is subject to traffic conditions

Line 2 - Airport bus departure times from Paris Porte Maillot to CDG Airport

	7.20 hrs	9.20 hrs	11.20 hrs	13.20 hrs	15.20 hrs	17.20 hrs	19.20 hrs	21.20 hrs
5.50 hrs	7.50 hrs	9.50 hrs	11.50 hrs	13.50 hrs	15.50 hrs	17.50 hrs	19.50 hrs	21.50 hrs
6.20 hrs	8.20 hrs	10.20 hrs	12.20 hrs	14.20 hrs	16.20 hrs	18.20 hrs	20.20 hrs	22.25 hrs
6.50 hrs	8.50 hrs	10.50 hrs	12.50 hrs	14.50 hrs	16.50 hrs	18.50 hrs	20.50 hrs	23.05 hrs

Les Cars Air France Line 2 bus ticket prices

Shuttle Bus Fares : Paris - Roissy Charles de Gaulle Airport

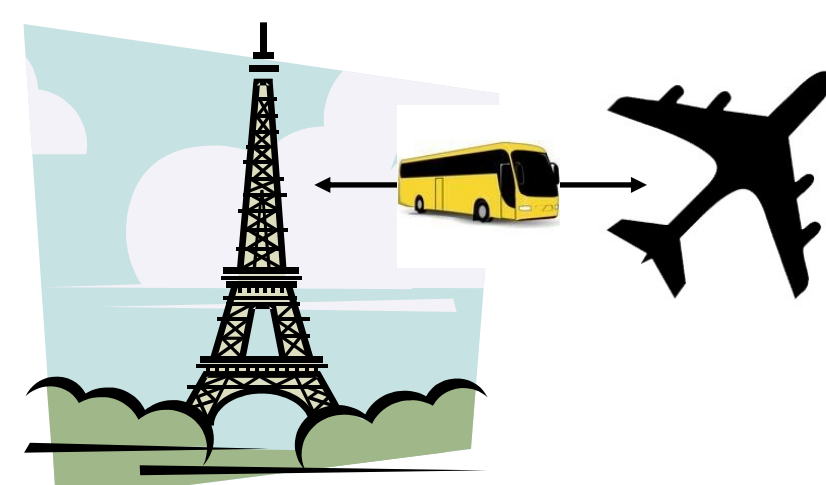


Airport bus fares Les Cars Air France Line 2	ONE WAY Price per person	ROUND-TRIP Price per person
Adult	€17.00	€29.00
Youth (aged -25 years)	€14.50	€29.00
Child (aged 2-11 years)	€8.50	€17.00
Group (discount for +4 people)	€14.50	—

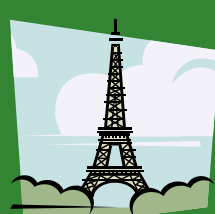
Airport bus ticket prices are correct at time of publication 2014-2015 but are subject to change without any prior notice

Buying your airport bus ticket

- You can purchase your ticket at ticket booths located at the departure points
- From the bus driver
- Purchase in advance online at their website - <http://www.lescarsairfrance.com>
But do bear in mind that if you do, the ticket is not refundable after purchase, and you must print this off and present this before you would be allowed to board the bus.



Paris tourist information
www.eutouring.com



© EUtouring.com

Related Paris transport maps

- [Paris Metro Maps](#)
- [Orly Airports shuttle services](#)
- [CDG Airport shuttle services](#)
- [RER train lines](#)
- [Paris tramway lines](#)
- [Paris buses](#)

